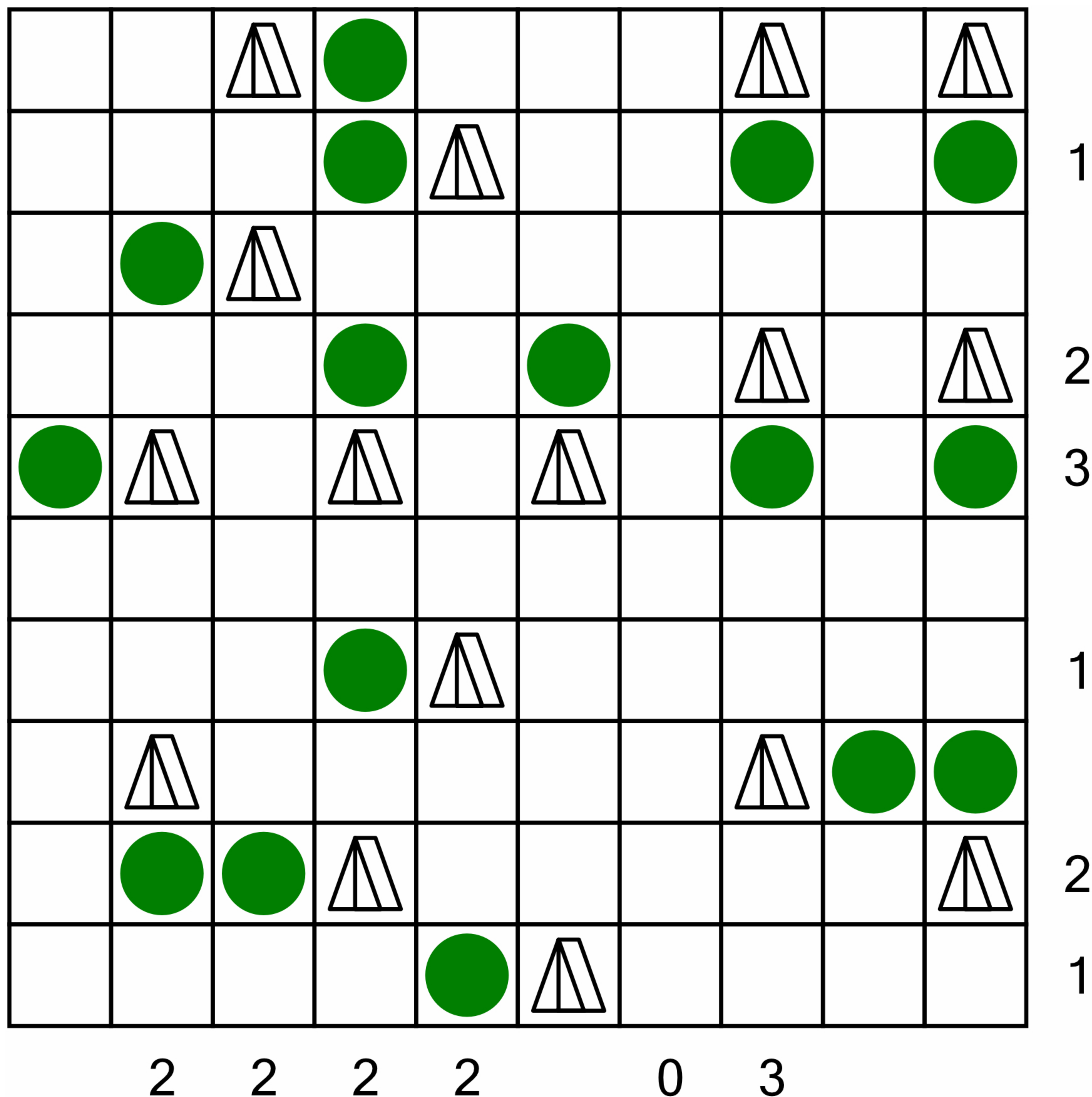


TENTS AND TREES

SOLUTION



Each tent is connected to a tree, and each tree is connected to a tent. This means there are the same number of tents and trees. The numbers show how many tents are in each row or column. A tent can only be placed next to a tree horizontally or vertically. **Tents are never placed next to each other in any direction (up, down, left, right, or diagonally).** A tree can have two tents next to it, but it is only connected to one of them.

Tutorial: visit the link below
<https://puzzlebreaks.com/Tents/>

puzzlebreaks.com